

## Cardinal Colorful & PANTONE® Perfect

This color selection represents a variety of the powder coatings Cardinal has as stock items in our warehouses across the United States. It is important to note that a large part of our business is custom formulation of powder and liquid coatings to specific criteria. If you cannot find the exact coating you would like, then please let us know. We would be delighted to build a product around your application.

Some projects require only a small amount of custom powder. To address this need, Cardinal developed a unique service called CardinalXpress to manufacture 50-pound batches of handcrafted, custom-designed powder. CardinalXpress powder can range from a full gloss to a 20% gloss system. Cardinal can also manufacture two gloss levels of fine texture in a custom color. We use exterior-durable, TGIC Polyester formulas that have proven to be some of the best powder to apply. CardinalXpress has a simple pricing structure to facilitate quick quotes and quick service. There simply is no reason to compromise your finish.

Cardinal is licensed by PANTONE® to accurately simulate both the PANTONE MATCHING SYSTEM® colors and the PANTONE Textile Color System® with our powder and liquid coatings. This can be done in batches as small as 50

Cardinal offers a small touch-up bottle with a brush in the cap for quick cover up. For projects that require the durability of powder, but cannot withstand a high baking temperature, we suggest a liquid polyurethane paint. Liquid coatings can be made to match powder-coated surfaces.

### **Important notes about our stock coatings:**

- Exterior powders start with a T, C or P.
- Metallic exterior powders (T353-GR06, etc.) require a clear coat for exterior durability due to the effects of weathering on the aluminum flakes used to create the metallic appearance.
- H and E powders are not suitable for exterior use if you need color and gloss stability.
- Each powder has some special characteristics we would like to share with you. Please contact your local Cardinal Technical Representative for specific information before you start a new project.
- If your preferred finish is not shown, then please let us know. Many of Cardinal's coatings are customized for special applications and not shown here.



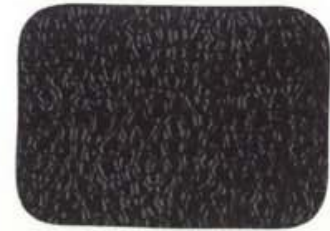
**P141-BK03**  
Black Fine Texture Low-Gloss



**C081-BK176**  
Black Wrinkle Semi-Gloss



**E311-BK04**  
Black Hammer Low-Gloss\*\*



**T013-BK62**  
Black Hammer Semi-Gloss



**T032-BR62**  
Brown Fine Texture Semi-Gloss



**P004-BR23**  
Bronze 40% Gloss



**P004-GR09**  
ANSI #49 Gray 40% Gloss



**P004-GR16**  
ANSI #61 Gray 40% Gloss



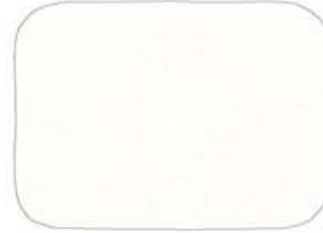
**H305-GR10**  
Light Gunmetal Gray 50% Gloss\*\*



**P003-GR01**  
Gray #26307 30% Gloss



**H303-WH16**  
Antique White 30% Gloss\*\*



**P005-WH01**  
White #27875 50% Gloss



**T002-WH08**  
White 20% Gloss



**T008-GR736**  
Gray ANSI 61 80% Gloss



**P008-GR21**  
RAL 7042 Gray 80% Gloss



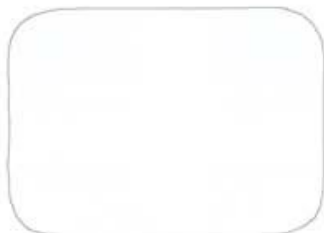
**T009-GR230**  
RAL 7035 Gray 90% Gloss



**T009-WH13**  
White 90% Gloss



**P009-WH14**  
White 90% Gloss



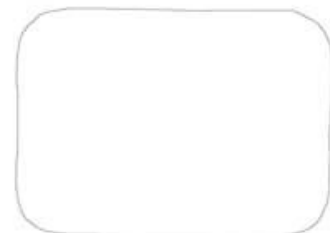
**H309-WH27**



**T032-BG03**



**T032-WH15**



**C031-WH120**





**C241-GR484**

Dark Gray Fine Texture Semi-Gloss



**C241-GR07**

Gray Fine Texture Semi-Gloss



**C241-GR305**

Bay Gray Fine Texture Semi-Gloss



**T243-GR522**

Flint Gray Fine Texture Semi-Gloss



**T241-GR11**

Platinum Gray Fine Texture Semi-Gloss



**T031-WH06**

Pearl White Fine Texture Semi-Gloss



**T243-GR301**

Quartz Gray Fine Texture Semi-Gloss



**T241-GR142**

Light Gray Fine Texture Semi-Gloss



**T241-BG137**

Beige Fine Texture Semi-Gloss



**T375-BK07**

Copper Vein Semi-Gloss\*



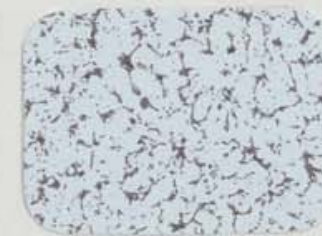
**T375-BK10**

Gold Vein Semi-Gloss\*



**T375-BK26**

Silver Vein Semi-Gloss\*



**T075-WH34**

Black/White Vein Semi-Gloss



**T064-BR24**

Bronze Hammertone Semi-Gloss



**T064-GR660**

Gray Hammertone Semi-Gloss



**T064-GR05**

Silver Hammertone Semi-Gloss



**T064-BL95**

Blue Hammertone Semi-Gloss



**T064-GN81**

Green Hammertone Semi-Gloss



**C013-GR08**



**T013-BG28**



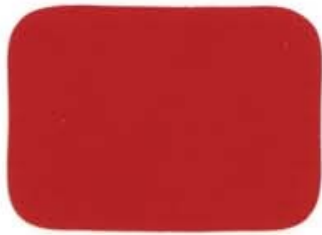
**T013-WH260**



**T013-WH09**

Computer Colors

Specialty Coatings



**P009-RD02**  
Dark Red 90% Gloss



**T009-RD03**  
Red 90% Gloss



**T241-RD129**  
Red Fine Texture Semi-Gloss



**T013-RD15**  
Red Hammer Semi-Gloss



**T009-RD01**  
Red 90% Gloss



**T009-OG26**  
International Orange 90% Gloss



**T009-OG01**  
Safety Orange 90% Gloss



**T009-YL71**  
Yellow 90% Gloss



**T009-YL14**  
Yellow #13538 90% Gloss



**T009-YL01**  
Yellow 90% Gloss



**T007-GN16**  
Traffic Green 70% Gloss



**T013-GN220**  
Green Hammer Semi-Gloss



**C006-GN03**  
Green 60% Gloss



**T007-GN13**  
D.O.T. Green #14066 70% Gloss



**T008-BL20**  
Dark Blue 80% Gloss



**T009-BL01**  
Blue 90% Gloss



**C241-BL210**  
Blue Fine Texture Semi-Gloss



**T009-BL05**  
Blue 90% Gloss



**H308-BL03**  
Blue 80% Gloss\*\*



**T032-BL04**  
Blue Texture #25109 Semi-Gloss



**P009-BK180**



**T009-BK12**



**P008-BK06**



**T008-BK181**



**T006-BK05**

**Southern California  
Corporate Headquarters**  
1329 Potrero Avenue  
South El Monte, CA 91733  
*tel* 626.444.9274  
*fax* 626.444.0382

**Powder Coating  
Manufacturing**  
15010 Don Julian Road  
City of Industry, CA 91746  
*tel* 626.937.6767  
*fax* 626.336.0410

**Arizona**  
3816 East Superior Avenue  
Phoenix, AZ 85040  
*tel* 602.437.2401  
*fax* 602.437.9251

**Northern California**  
890 Commercial Street  
San Jose, CA 95112  
*tel* 408.452.8522  
*fax* 408.452.0318

**Colorado**  
1195 East 64th Avenue

**Missouri**  
44 Worthington Access Drive  
Maryland Heights, MO 63043  
*tel* 314.878.3010  
*fax* 314.878.0903

**North Carolina**  
540 Vandever Street  
High Point, NC 27260  
*tel* 336.882.9493  
*fax* 336.882.9494

**Pennsylvania**  
4 Harmer Street  
Warren, PA 16365  
*tel* 814.723.0721  
*fax* 814.723.1556

**Texas**  
4606 Brass Way  
Dallas, TX 75236  
*tel* 214.333.9801  
*fax* 214.333.9831

**Washington State**  
19230 144th Avenue Northeast  
Woodinville, WA 98072  
*tel* 425.483.5665

